

## FWD Flameproof Air Warmers

The FWD range of air warmers is designed for use in small work or storage areas, and are certified for use in hazardous areas where the atmosphere is classified as a Zone 1 or 2 (IIA, IIB, IIC) gas group, or a Zone 21 or 22 (IIIA, IIIB, IIIC) dust group.

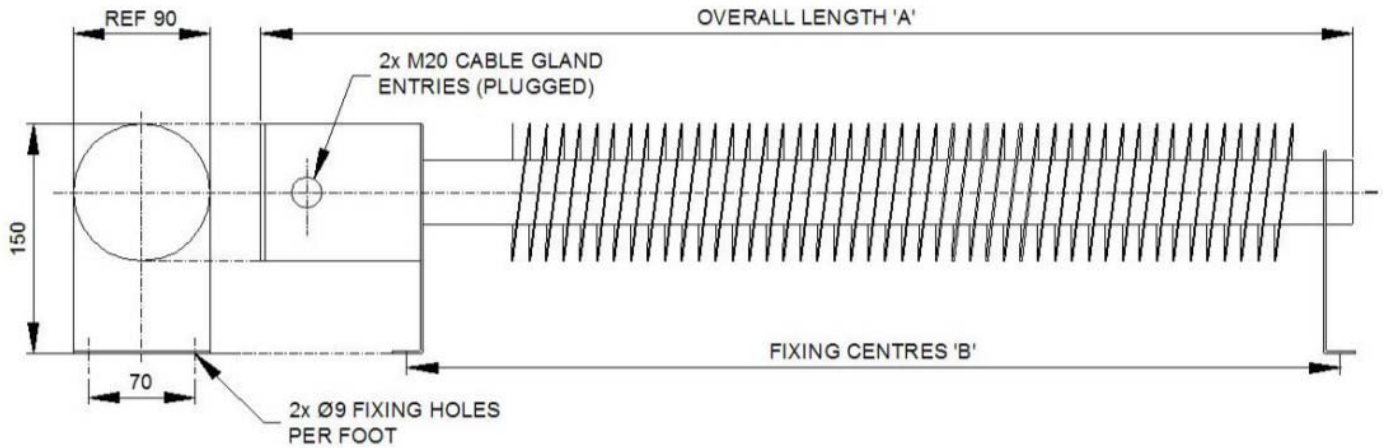


### FEATURES

- Certified to ATEX, IECEx, CU TR (EAC) and KGS standards
- Fabricated carbon steel enclosure weatherproof to IP66
- Temperature classes T2, T3 and T4 available
- Suitable for horizontal floor or wall mounting
- 2 × 20mm (plugged) cable entries provided as standard
- Corrosion resistant powder coated finish
- T3 / T4 units suitable for ambient temperatures from -60°C to +40°C and T2 units to +60°C
- Individually replaceable heating elements

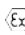
### TYPICAL APPLICATIONS

- Aircraft hangar service bays
- Ammunition depots
- Battery stores
- Biogas plants
- Chemical plants
- Compressor enclosure
- Container heating
- Crane cabins
- Dusty environments
- Explosive stores
- Firework factories
- Fuel servicing areas
- Gas installations
- Offshore installations
- Paint / solvent stores
- Skid enclosure
- Spray booths
- Sugar refineries



Model	T Class	Watts Rating	Dimensions				Weight (kg)
			A (l)	B (leg length)	C (w)	D (h)	
FWD-500-T3	3	500	800	670	90	150	9
FWD-1000-T3	3	1000	1300	1170	90	150	12
FWD-1500-T3	3	1500	1900	1770	90	150	17
FWD-2000-T3	3	2000	2450	2320	90	150	20
FWD-500-T4	4	500	1300	1170	90	150	12
FWD-750-T4	4	750	1900	1770	90	150	17
FWD-1000-T4	4	1000	2450	2320	90	150	20

### Certification

**ATEX/IECEx**  II 2 G/D  
 Ex d IIC T2 to T4 Gb suitable for Zones 1 and 2  
 Ex t IIIC T300 to T135°C Db suitable for Zones 21 and 22

### CU TR (EAC)

1Ex db IIC T4...T2 Gb X  
 Ex tb IIIC T135°C...T300°C Db X

**KGS** certification available

### Rating

500W to 2kW

### Enclosure

Mild steel powder coated orange/grey (stainless steel option available to special order)

### Controls

If required, the heaters can be controlled from the EXHEAT Industrial range of remote mounted thermostats available for use in hazardous areas

### Mounting

Pre-drilled support feet supplied as standard; heaters should be mounted horizontally with unrestricted air flow around the unit

### Voltage

**1 phase:** 110 to 120V and 230 to 254V  
**3 phase:** 380 to 440V, subject to design parameters  
**Voltage tolerance:** +0/-10%